



GT-600EX

CARRIER : TC-4255-2

GENERAL DATA

CRANE CAPACITY		60,000 kg at 3.0 m
BOOM		5-section, 11.0 m – 43.0 m
DIMENSION		
Overall length	approx.	13,170 mm
Overall width	approx.	2,820 mm
Overall height	approx.	3,730 mm
MASS*		
Gross vehicle mass	approx.	41,500 kg
— front axle	approx.	16,000 kg
— rear axle	approx.	25,500 kg
* incl. 35 t hook block (optional)		
PERFORMANCE		
Max. travelling speed	computed	84 km/h
Gradeability (tan θ)	computed	58 %

CRANE SPECIFICATIONS

MODEL

GT-600EX

CAPACITY

60,000 kg at 3.0 m

BOOM

5-section full power partially synchronized telescoping boom of round box construction with 5 sheaves at boom head. The synchronization system consists of 2 telescope cylinders, extension cables and retraction cables. Selection of 2 boom telescoping modes.

Hydraulic cylinders fitted with holding valves.

Fully retracted length..... 11.0 m

Fully extended length..... 43.0 m

Extension speed..... 32.0 m in 135 s

JIB

2-staged slewing around boom extension. Triple offset (5° / 25° / 45°) type. Stores alongside base boom section. Assistant cylinders for mounting and stowing. Single sheave at jib head.

Length 8.8 m and 15.2 m

SINGLE TOP (AUXILIARY BOOM SHEAVE)

Single sheave.

Mounted to main boom head for single line work.

ELEVATION

By a double-acting hydraulic cylinder, fitted with holding valve.

Elevation speed..... - 2° to 81° in 76 s

HOIST-Main winch

Variable speed type with grooved drum driven by hydraulic axial piston motor through winch speed reducer. Power load lowering and hoisting.

Equipped with automatic brake (Neutral brake) and counter-balance valve. Controlled independently of auxiliary winch.

Single line pull..... 54.9 kN {5,600 kgf}

Single line speed..... 139 m/min. (at the 4th layer)

Wire rope..... Spin-resistant type

Diameter x length..... 19 mm x 235 m

HOIST-Auxiliary winch

Variable speed type with grooved drum driven by hydraulic axial piston motor through winch speed reducer. Power load lowering and hoisting.

Equipped with automatic brake (Neutral brake) and counterbalance valve. Controlled independently of main winch.

- Single line pull..... 54.9 kN {5,600 kgf}
- Single line speed..... 121 m/min. (at the 2nd layer)
- Wire rope..... Spin-resistant type
- Diameter x length..... 19 mm x 127 m

SLEWING

Hydraulic axial piston motor driven through planetary slewing speed reducer. Continuous 360° full circle slewing on ball bearing slew ring. Equipped with manually locked/released slewing brake.

- Slewing speed..... 1.7 min⁻¹ { rpm }

HYDRAULIC SYSTEM

- Pumps..... 2 variable piston pumps for telescoping, elevating and winches. Tandem gear pump for slewing and optional equipment.
- Control valves..... Multiple valves actuated by pilot pressure with integral pressure relief valves.
- Circuit..... Equipped with air cooled type oil cooler. Oil pressure appears on AML display for main circuit.
- Hydraulic oil tank capacity..... approx. 690 liters
- Filters..... Return line filter

CRANE CONTROL

By 4 control levers for slewing, boom hoist, main winch, boom telescoping or auxiliary winch with 2 control pedals for boom hoist and boom telescoping based on ISO standard layout. Control lever stands can change neutral positions and tilt for easy access to cab.

CAB

One sided one-man type, steel construction with sliding door access and tinted safety glass windows opening at side. Door window is powered control. Operator's 3 way adjustable seat with headrest and armrest. Hot water cab heater and air conditioning.

TADANO Automatic Moment Limiter (Model:AML-C)

Main unit in crane cab gives audible and visual warning of approach to overload. Automatically cuts out crane motions (including slewing motion) before overload. With working range (load radius and/or boom angle and/or tip height and/or slewing range) limit function.

Following functions are displayed.

- Moment as percentage
- Number of parts of line of rope
- Boom angle
- Boom length
- Load radius
- Outriggers position
- Actual hook load
- Permissible load
- Boom position indicator
- Potential hook height
- Slewing angle
- Main hydraulic oil pressure
- Jib length and jib offset angle (only when jib operation)

OUTRIGGERS

Hydraulically operated H-type outriggers. Each outrigger controlled simultaneously or independently from either side of carrier. Equipped with sight level gauge. Floats mounted integrally with the jacks retract to within vehicle width. All cylinders fitted with pilot check valves. Crane operation with different extended length of each outrigger.

Equipped with extension width detector for each outrigger.

- Extended width
 - Fully..... 6,800 mm
 - Middle..... 4,600 mm
 - Minimum..... 2,390 mm
- Float size (Diameter)..... 400 mm

FRONT JACK

A fifth hydraulically operated outrigger jack. Mounted to the front frame of carrier to permit 360° lifting capabilities.

Hydraulic cylinder fitted with pilot check valve.

- Float size(Diameter)..... 400 mm

COUNTERWEIGHT

Integral with swing frame

- Mass..... 4,370 kg

NOTE :

Each crane motion speed is based on unladen conditions.

CARRIER SPECIFICATIONS

SPEC. SHEET NO. GT-600E-1-00301/EX-21

MANUFACTURER

TADANO LTD.

MODEL

TC-4255-2 (Left-hand steering , 8 x 4)

ENGINE [EURO-3]

Model..... Daimler OM457LA
Type..... 4 cycle, turbo charged and inter cooled.
Piston displacement ... 11,967 cm³
Bore x stroke..... 128 mm x 155 mm
Max. output 260 kW{353PS} at 1,900 min⁻¹{rpm}
Max. torque 1,850 Nm{188kgf-m} at 1,100 min⁻¹{rpm}

CLUTCH

Dry single plate, hydraulically operated clutch release mechanism with air assisted booster.

TRANSMISSION

9 forward and 1 reverse speeds, synchromesh on 2nd –9th gear and constant-mesh on 1st and reverse gear.

AXLES

Front..... Reverse-elliot type, steering axle.
Rear..... Full floating type, driving axle
with inter-wheel differential lock.

STEERING

Dual circuit hydraulic and mechanical steering of both front axles with hydraulic power booster. 3rd axle reduction gear-mounted emergency steering pump.

SUSPENSION

Front..... Hydraulic/pneumatic suspension, with hydraulic lock system and leveling adjustment.
Rear..... Hydraulic/pneumatic suspension, with hydraulic lock system and leveling adjustment.

BRAKE SYSTEM

Service..... Full air brakes on all wheels. Dual-circuit system.
Parking/ Emergency..... Spring loaded brake on rear 4-wheel controlled by knob of spring brake valve.
Auxiliary..... Constant throttle system with exhaust flap brake.

ELECTRIC SYSTEM

24 V DC. 2 batteries of 12 V
Alternator..... 28 V – 80 A

FUEL TANK CAPACITY

300 liters

CAB

2-man full width cab of steel structure, with safety glass. Seats adjustable and air-suspended with headrest and 3point safety belt.

TIRES

Front..... 315/80R22.5, Single x 4
Rear..... 315/80R22.5, Dual x 4
Spare..... 315/80R22.5, Single x 1

TURN RADIUS

Min. turning radius (at center of extreme outer tire).....11.3m

EQUIPMENT

FOR CRANE

Standard Equipment

Automatic moment limiter (AML)
External lamp (AML)
Pendant type over-winding cutout
Winch automatic fail-safe brake
Winch drum rotation indicator (visual type)
Winch drum mirror
Cable follower
5.6t capacity hook block (swivel hook)
Hook safety latch
Pilot check valves
Counterbalance valves
Hydraulic pressure relief valves
Slewing brake
Slewing lock
Boom angle indicator
Boom elevation foot pedal
Boom telescoping foot pedal
Outrigger extension width detector
Front jack set up detector
Front jack overload alarm
Automatic speed reduction and slow stop function on boom elevation and/or slewing(slewing range restricted only).
Hydraulic oil cooler
3 working lights
Front windshield wiper and washer
Roof window wiper and washer
Power window (door of the cab)
3 way adjustable cloth seat with headrest and armrest
Cab floor mat
Sun visor (front and roof)

Optional Equipment

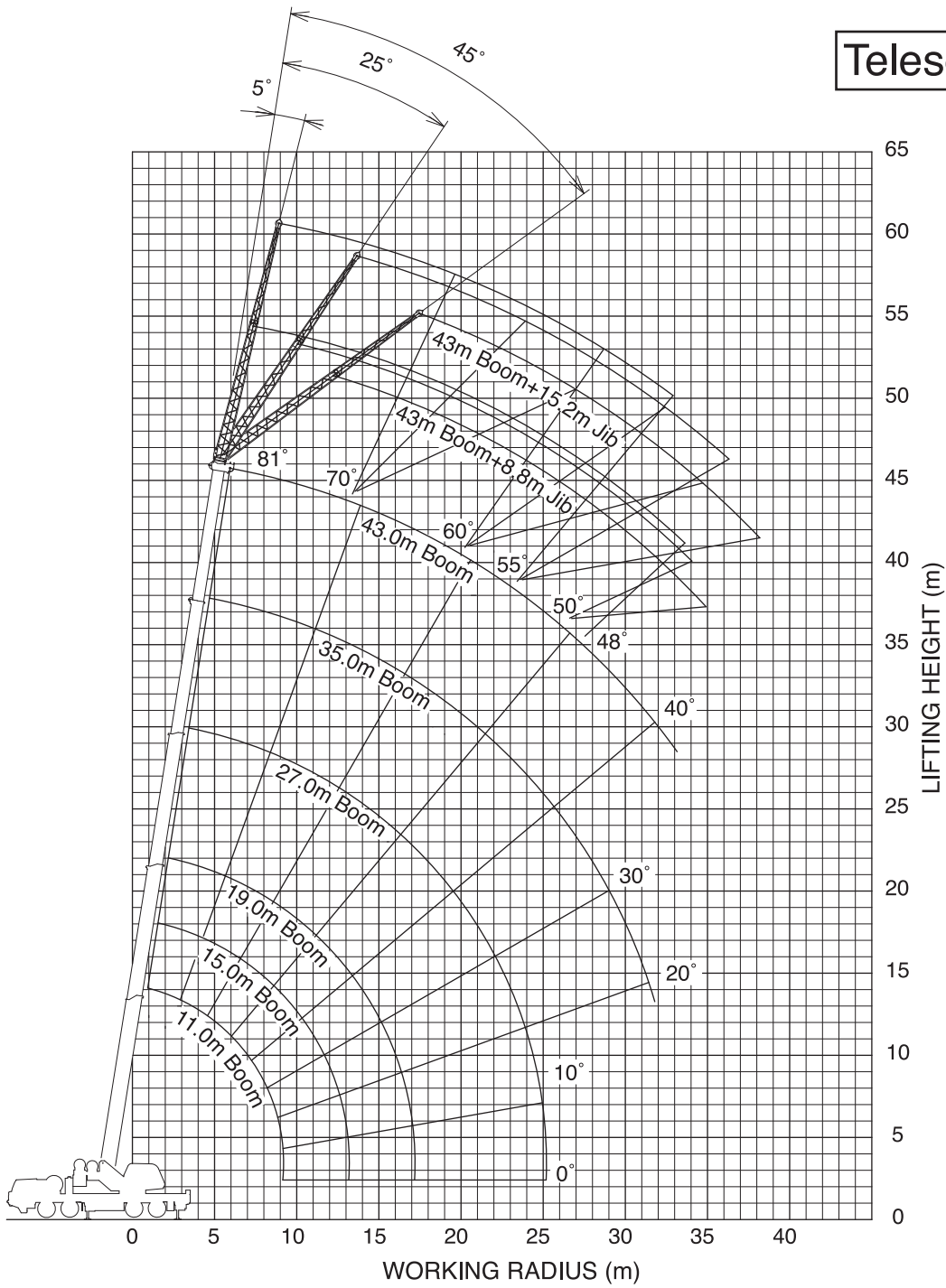
60 t capacity hook block (6 sheaves)
 35 t capacity hook block (3 sheaves)
 Over-unwinding prevention
 Air conditioner (crane cab)
 Wind speed indicator

FOR CARRIER

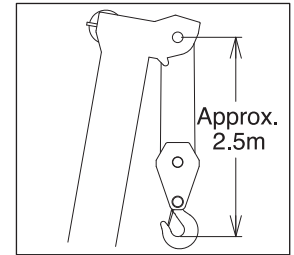
Standard Equipment

Spare tire with lock key
Rear fog lights
Inter-wheel differential gear lock
Emergency steering pump
Fuel tank cap with lock key
Air dryer
Towing hooks (front and rear, eye type)
Engine over-run alarm
Air filter warning light (instrument cluster)
Cooling water level warning light
Engine hour meter
PTO hour meter
Reversing signal
Low air pressure warning lamp and buzzer
AM / FM radio
Adjustment and heating rearview mirror
Sun visor
Tilting-telescoping steering wheel
3 way adjustable air suspension seat
Tachometer/ Speedometer (with odometer)
Air conditioner
3 point type seat belt
Windshield wiper and washer
Cigarette lighter
Cruise control
Transmission oil drain cock
Tire inflation
Owner's tool set
Tool box with lock key

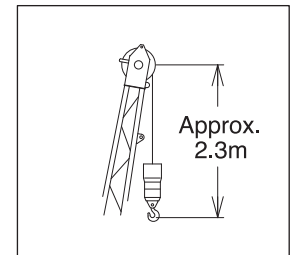
Telescoping mode I



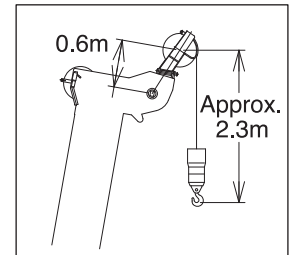
BOOM



JIB



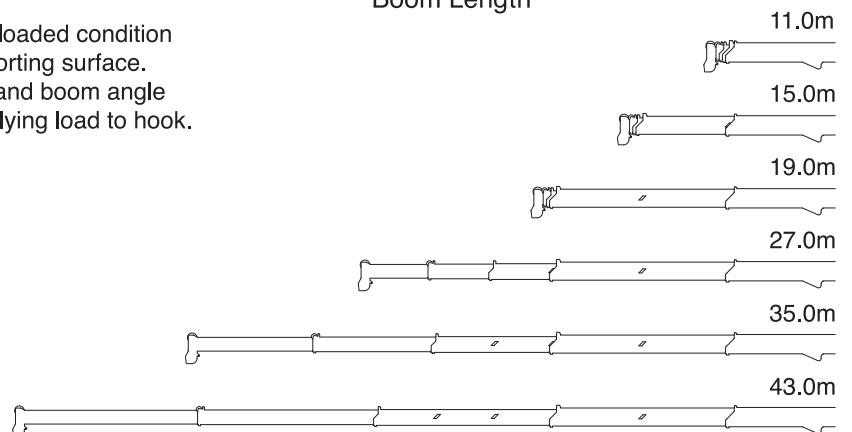
SINGLE TOP



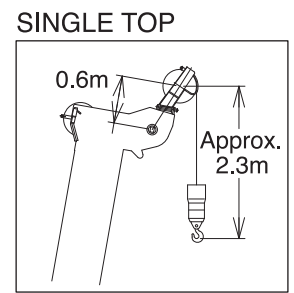
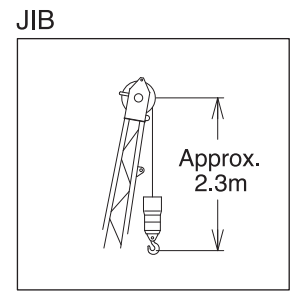
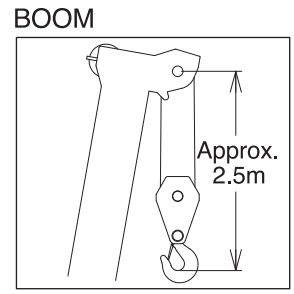
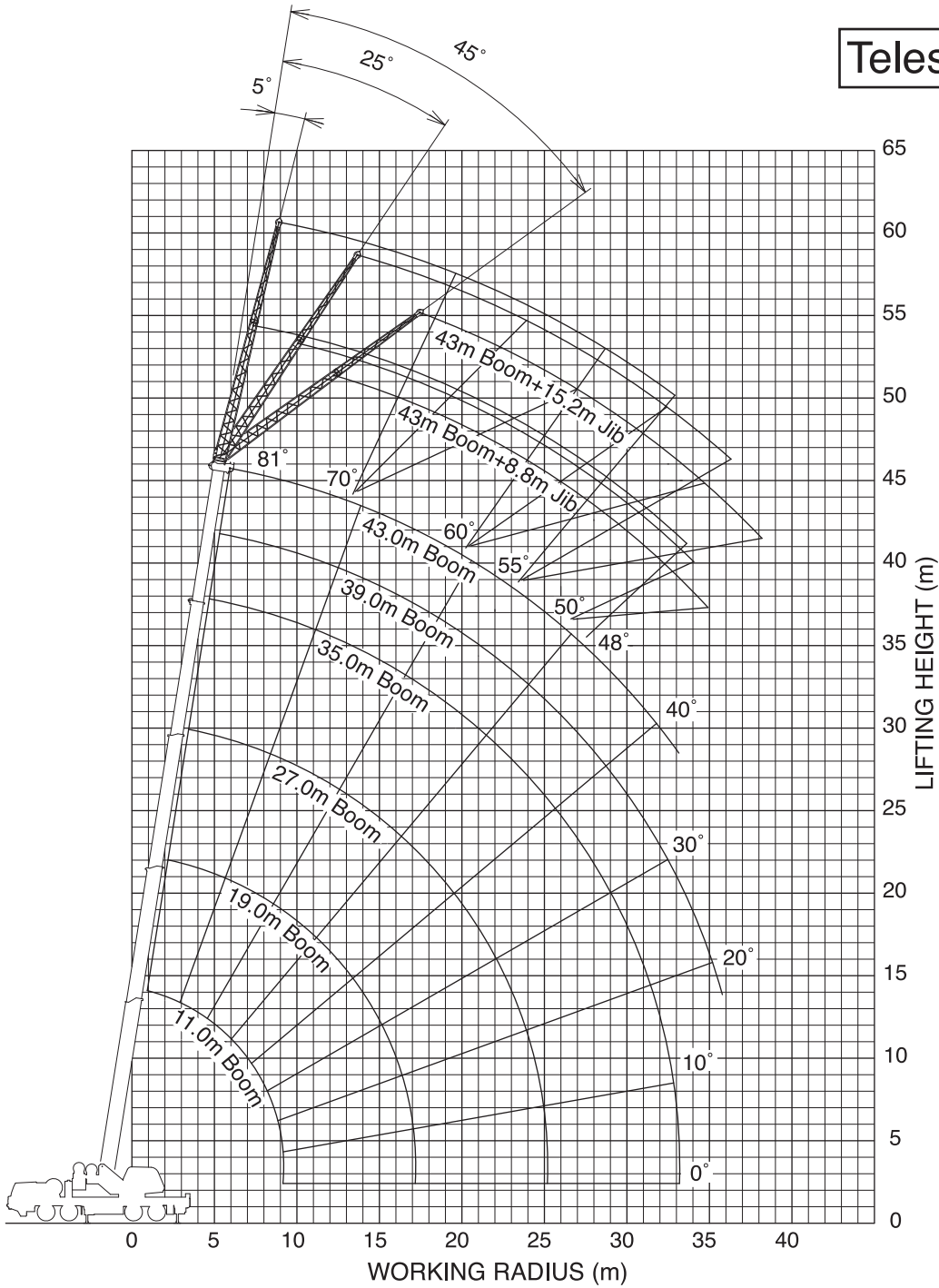
NOTE:

Boom and jib geometry shown are for unloaded condition and machine standing level on firm supporting surface. Boom deflection and subsequent radius and boom angle change must be accounted for when applying load to hook.

Boom Length

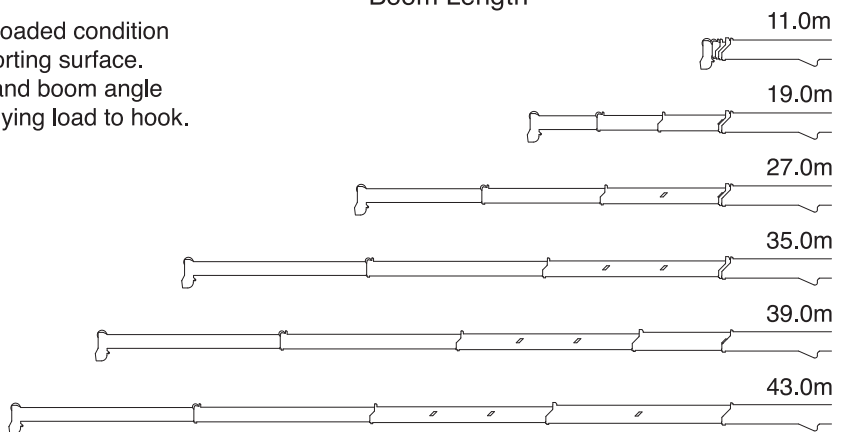


Telescoping mode II



NOTE:
 Boom and jib geometry shown are for unloaded condition and machine standing level on firm supporting surface.
 Boom deflection and subsequent radius and boom angle change must be accounted for when applying load to hook.

Boom Length



RATED LIFTING CAPACITIES (BOOM)

SPEC. SHEET NO. GT-600E-1-00301/EX-21

UNIT: x1,000kg CLASS OF CRANE ; C3

Outriggers fully extended (6.8m)																				
B	A	11.0		15.0		19.0		27.0		35.0		39.0		43.0						
	C	C	C	C	C	C	C	C	C	C	C	C	C	C						
3.0	70	60.0	76	60.0	79	32.0	79	22.0												
3.5	67	47.5	74	47.5	78	32.0	78	22.0												
4.0	64	42.4	72	42.4	76	32.0	76	22.0	81	22.0	81	17.0								
4.5	61	38.1	70	38.1	75	32.0	75	22.0	80	22.0	80	17.0								
5.0	58	34.5	68	34.5	73	32.0	73	22.0	79	22.0	79	17.0								
5.5	55	31.4	66	31.4	72	30.9	71	21.4	78	21.3	78	17.0								
6.0	51	28.7	63	28.7	70	27.4	70	20.6	77	20.7	77	17.0	80	14.0	81	12.0				
6.5	47	26.4	61	26.4	68	24.0	68	19.8	76	20.0	76	16.3	80	14.0	80	12.0				
7.0	43	24.4	59	24.4	67	21.1	66	19.1	75	19.5	75	15.4	79	14.0	79	11.9	80	10.0		
7.5	39	22.7	57	22.7	65	18.8	65	18.5	74	18.8	73	14.6	78	13.5	78	11.5	80	10.0		
8.0	34	20.0	54	20.0	63	16.9	63	17.9	72	17.1	72	13.9	77	13.0	77	11.1	79	10.0	80	8.5
9.0	20	15.7	49	15.7	60	13.9	60	16.8	70	14.3	70	12.6	76	12.1	76	10.3	78	10.0	79	8.5
10.0			43		56	11.6	56	14.7	68	12.2	68	11.6	74	11.7	74	9.7	76	9.7	78	8.5
11.0			36		52	9.5	52	12.4	65	10.5	65	10.7	72	10.2	72	9.0	75	9.2	77	8.5
12.0			28		47	7.9	48	10.6	63	9.2	63	9.9	70	9.0	71	8.4	73	8.7	76	8.1
14.0					37	5.5	38	7.9	58	6.9	58	8.3	67	7.1	67	7.3	70	7.5	73	6.9
16.0					24	3.8	25	6.2	52	5.2	52	6.5	63	5.6	63	6.4	67	6.1	70	5.5
18.0									46	3.9	46	5.2	59	4.4	59	5.4	63	5.0	66	4.4
20.0									39	3.0	40	4.2	55	3.5	55	4.4	60	4.0	63	3.6
22.0									31	2.2	32	3.5	50	2.7	51	3.6	56	3.2	60	2.9
24.0									20	1.6	22	2.9	46	2.1	46	3.0	52	2.6	57	2.3
26.0													41	1.6	41	2.5	48	2.1	53	1.8
28.0													35	1.2	35	2.1	43	1.7	50	1.4
30.0													28	0.8	28	1.7	39	1.3	46	1.0
32.0													18	0.5	18	1.4	33	1.0	42	0.7
34.0																	26	0.8	37	0.5
36.0																	17	0.6		
D							0°						18°		0°		17°		37°	
Telescoping conditions(%)																				
Telescoping Mode	I, II	I	I	II	I	II	I	II	I	II	I	II	I	II	I, II					
2nd boom	0	50	100	0	100	0	100	0	100	0	100	0	50	100						
3rd boom	0	0	0	33	33	66	66	100	100	100	100	100	100	100						
4th boom	0	0	0	33	33	66	66	100	100	100	100	100	100	100						
Top boom	0	0	0	33	33	66	66	100	100	100	100	100	100	100						

- A: Boom length (m)
- B: Load radius (m)
- C: Loaded boom angle (°)
- D: Minimum boom angle (°) for indicated length (no load)

NOTES :

1. Rated lifting capacities shown in the table are based on condition that the crane is set on firm level surface. Those above bold lines are based on crane strength and those below, on its stability.
2. Rated lifting capacities based on crane stability are according to ISO 4305 / DIN 15019 part 2.
3. The mass of the hook (570kg for *60t capacity, 410kg for *35t capacity, 150kg for *5.6t capacity), slings and all similarly used load handling devices must be considered as part of the load and must be deducted from the lifting capacities. * : Optional
4. For rated lifting capacity of single top, reduce the rated lifting capacities of relevant boom according to a weight reduction for auxiliary load handling equipment. Capacities of single top shall not exceed 5,600 kg including main hook.
5. Standard number of part lines for each boom length is as shown below. Load per line should not surpass 54.9 kN {5,600 kgf} for main winch and auxiliary winch.

Boom length	11.0m	11.0m to 15.0m	15.0m to 19.0m	19.0m to 27.0m	27.0m to 43.0m	Jib / Single top
No. of part lines	12	10	7	5	4	1

The lifting capacity data stored in the AUTOMATIC MOMENT LIMITER (AML) is based on the standard number of parts of line listed in the chart.

Maximum lifting capacity is restricted by the number of parts of line of AUTOMATIC MOMENT LIMITER (AML).

6. Without front jack extended, when the boom is within the Over-front, rated lifting capacities are different from those for the boom in the Over-side and Over-rear.

RATED LIFTING CAPACITIES (BOOM)

SPEC. SHEET NO. GT-600E-1-00301/EX-21

UNIT: x1,000kg CLASS OF CRANE ; C3

Outriggers extended to middle (4.6m)																				
A \ B	11.0		15.0		19.0		27.0		35.0		39.0		43.0							
	C	C	C	C	C	C	C	C	C	C	C	C	C	C						
3.0	70	40.0	76	36.0	80	32.0	79	22.0												
3.5	67	34.0	74	29.2	78	24.5	78	22.0												
4.0	64	27.8	72	22.9	76	19.6	76	22.0	81	17.0	81	17.0								
4.5	61	22.3	70	18.6	75	16.0	74	19.1	80	14.4	80	16.4								
5.0	58	18.4	68	15.4	73	13.4	73	16.3	79	12.4	79	14.3								
5.5	55	15.4	65	13.0	71	11.3	71	14.1	77	10.7	78	12.5								
6.0	51	13.2	63	11.2	70	9.7	70	12.3	76	9.4	76	11.1	80	8.7	80	10.0				
6.5	47	11.4	61	9.6	68	8.3	68	10.9	75	8.2	75	9.9	79	7.8	80	9.0				
7.0	43	9.9	59	8.3	66	7.2	66	9.7	74	7.3	74	9.0	78	6.9	79	8.2	80	7.4		
7.5	39	8.5	57	7.3	64	6.3	64	8.7	73	6.4	73	8.1	77	6.2	78	7.5	79	6.7		
8.0	33	7.3	54	6.3	63	5.5	63	7.8	72	5.7	72	7.4	77	5.6	77	6.8	78	6.1	80	5.3
9.0	19	5.5	49	4.9	59	4.1	59	6.4	69	4.6	70	6.1	75	4.6	75	5.7	77	5.1	78	4.4
10.0			43	3.7	55	3.1	55	5.3	67	3.6	67	5.2	73	3.7	73	4.9	75	4.3	77	3.6
11.0			36	2.7	51	2.2	51	4.4	65	2.9	65	4.4	71	3.0	71	4.2	74	3.6	76	3.0
12.0			28	1.9	47	1.5	47	3.5	62	2.3	62	3.7	69	2.5	70	3.6	72	3.1	74	2.5
14.0							38	2.3	57	1.3	57	2.7	66	1.6	66	2.7	69	2.2	71	1.6
16.0							25	1.5			52	1.9			62	2.0	66	1.5		
18.0											46	1.2			58	1.4				
20.0											39	0.7			54	0.9				
D		0°		0°		37°		0°		56°		37°		65°		53°		63°		70°
Telescoping conditions(%)																				
Telescoping Mode	I, II	I	I	II	I	II	I	II	I	II	II	I, II								
2nd boom	0	50	100	0	100	0	100	0	100	0	50	100								
3rd boom	0	0	0	33	33	66	66	100	100	100	100	100								
4th boom	0	0	0	33	33	66	66	100	100	100	100	100								
Top boom	0	0	0	33	33	66	66	100	100	100	100	100								

UNIT: x1,000kg CLASS OF CRANE ; C3

Outriggers extended to minimum (2.39m)									
A \ B	11.0		15.0		19.0				
	C	C	C	C	C	C			
3.0	70	17.9	76	15.0	79	12.9	79	15.5	
3.5	67	14.5	74	12.3	78	10.6	77	13.0	
4.0	64	12.0	72	10.1	76	8.8	76	11.1	
4.5	61	10.0	70	8.5	74	7.4	74	9.6	
5.0	58	8.5	67	7.1	73	6.2	73	8.3	
5.5	55	7.3	65	6.0	71	5.2	71	7.3	
6.0	51	6.2	63	5.1	70	4.3	69	6.4	
6.5	47	5.4	61	4.3	68	3.6	68	5.7	
7.0	43	4.6	59	3.7	66	3.0	66	5.0	
7.5	39	3.9	56	3.1	64	2.5	64	4.5	
8.0	33	3.3	54	2.6	63	2.0	63	4.0	
9.0	19	2.3	48	1.7	59	1.2	59	3.2	
10.0			43	1.1			55	2.5	
11.0			39	0.5			51	2.0	
12.0							47	1.5	
14.0							38	0.7	
D		0°		0°		58°		36°	
Telescoping conditions (%)									
Telescoping Mode	I, II	I	I	II					
2nd boom	0	50	100	0					
3rd boom	0	0	0	33					
4th boom	0	0	0	33					
Top boom	0	0	0	33					

- A: Boom length (m)
- B: Load radius (m)
- C: Loaded boom angle (°)
- D: Minimum boom angle (°) for indicated length (no load)

RATED LIFTING CAPACITIES (JIB)

SPEC. SHEET NO. GT-600E-1-00301/EX-21

CLASS OF CRANE ; C3

Outriggers fully extended (6.8m)												
C	43.0m Boom + 8.8m Jib						43.0m Boom + 15.2m Jib					
	5° Tilt		25° Tilt		45° Tilt		5° Tilt		25° Tilt		45° Tilt	
	R	W	R	W	R	W	R	W	R	W	R	W
81°	9.2	4.00	12.2	3.58	14.1	2.47	11.3	2.60	16.2	1.69	19.5	1.17
80°	10.2	4.00	13.3	3.50	15.1	2.44	12.5	2.60	17.4	1.65	20.6	1.15
79°	11.3	4.00	14.2	3.42	15.9	2.40	13.6	2.60	18.4	1.61	21.5	1.13
78°	12.3	4.00	15.1	3.32	16.8	2.37	14.8	2.60	19.5	1.58	22.4	1.12
77°	13.3	4.00	16.0	3.22	17.6	2.34	15.9	2.56	20.4	1.54	23.4	1.10
76°	14.2	3.85	16.9	3.12	18.5	2.32	17.0	2.46	21.5	1.51	24.3	1.09
75°	15.2	3.72	17.7	3.04	19.3	2.29	18.1	2.38	22.4	1.48	25.2	1.08
73°	17.0	3.50	19.5	2.88	21.0	2.24	20.1	2.22	24.3	1.43	27.0	1.05
70°	19.5	3.20	22.0	2.68	23.3	2.18	23.0	2.01	27.2	1.35	29.4	1.02
68°	21.4	3.03	23.6	2.56	24.8	2.14	25.1	1.90	29.0	1.31	31.1	1.00
65°	23.7	2.52	25.9	2.25	27.0	2.09	27.8	1.75	31.8	1.25	33.5	0.98
63°	25.1	2.13	27.2	1.92	28.4	1.86	29.5	1.52	33.3	1.21	35.1	0.97
60°	27.3	1.66	29.3	1.52	30.4	1.48	31.8	1.14	35.7	0.99	37.1	0.95
58°	28.8	1.40	30.7	1.28	31.7	1.24	33.4	0.92	37.0	0.81	38.2	0.77
55°	30.9	1.07	32.7	0.96	33.4	0.93	35.7	0.66	39.1	0.56	40.1	0.53
53°	32.2	0.86	33.9	0.77	34.6	0.75						
50°	34.1	0.58	35.7	0.52	36.4	0.51						
48°	35.3	0.43										

CLASS OF CRANE ; C3

Outriggers fully extended (6.8m)												
C	39.0m Boom (telescoping mode II) + 8.8m Jib						39.0m Boom (telescoping mode II) + 15.2m Jib					
	5° Tilt		25° Tilt		45° Tilt		5° Tilt		25° Tilt		45° Tilt	
	R	W	R	W	R	W	R	W	R	W	R	W
81°	8.1	4.40	11.0	3.58	13.0	2.47	10.2	2.60	15.0	1.69	18.3	1.17
80°	9.0	4.40	11.9	3.50	13.8	2.44	11.3	2.60	16.0	1.65	19.3	1.15
79°	9.9	4.40	12.8	3.42	14.7	2.40	12.3	2.60	16.9	1.61	20.2	1.13
78°	10.9	4.40	13.7	3.35	15.5	2.37	13.4	2.60	17.9	1.58	21.0	1.12
77°	11.8	4.40	14.5	3.28	16.3	2.34	14.4	2.56	18.8	1.54	21.9	1.10
76°	12.6	4.24	15.3	3.21	17.1	2.32	15.4	2.46	19.8	1.51	22.7	1.09
75°	13.5	4.09	16.1	3.15	17.8	2.29	16.3	2.38	20.7	1.48	23.5	1.08
73°	15.1	3.85	17.8	3.04	19.3	2.24	18.2	2.22	22.5	1.43	25.1	1.05
70°	17.6	3.51	20.1	2.89	21.5	2.18	20.9	2.01	25.1	1.35	27.4	1.02
68°	19.2	3.32	21.7	2.78	22.8	2.14	22.7	1.90	26.8	1.31	28.9	1.00
65°	21.5	3.07	23.8	2.61	24.8	2.09	25.3	1.75	29.1	1.25	31.0	0.98
63°	23.0	2.93	25.2	2.52	26.2	2.07	27.0	1.67	30.8	1.21	32.4	0.97
60°	25.1	2.58	27.2	2.31	28.2	2.03	29.4	1.56	33.0	1.16	34.4	0.95
58°	26.5	2.26	28.5	2.02	29.5	1.93	31.1	1.49	34.5	1.13	35.7	0.94
55°	28.3	1.83	30.3	1.65	31.1	1.59	33.2	1.29	36.5	1.09	37.5	0.93
53°	29.6	1.59	31.4	1.44	32.1	1.40	34.6	1.10	37.8	0.96	38.6	0.90
50°	31.4	1.28	33.1	1.17	33.7	1.14	36.6	0.85	39.4	0.74	40.0	0.71
48°	32.5	1.10	34.1	1.01	34.6	0.99	37.8	0.70	40.5	0.62	41.0	0.59
45°	34.2	0.87	35.6	0.80	35.9	0.79	39.6	0.51	42.1	0.45	42.3	0.44
43°	35.3	0.74	36.6	0.68			40.8	0.41				
40°	36.8	0.57	37.4	0.52								
38°	37.7	0.46	38.8	0.43								

C: Boom angle
 R: Load radius (m)
 W: Rated lifting capacity (UNIT: x1,000kg)

RATED LIFTING CAPACITIES (JIB)

SPEC. SHEET NO. GT-600E-1-00301/EX-21

CLASS OF CRANE ; C3

Outriggers fully extended (6.8m)												
C	35.0m Boom (telescoping mode I) + 8.8m Jib						35.0m Boom (telescoping mode I) + 15.2m Jib					
	5° Tilt		25° Tilt		45° Tilt		5° Tilt		25° Tilt		45° Tilt	
	R	W	R	W	R	W	R	W	R	W	R	W
81°	7.3	4.50	10.3	3.58	12.1	2.47	9.2	2.60	14.1	1.69	17.6	1.17
80°	8.1	4.50	11.1	3.50	12.8	2.44	10.1	2.60	15.0	1.65	18.4	1.15
79°	8.9	4.50	11.8	3.42	13.5	2.40	10.9	2.60	15.9	1.61	19.2	1.13
78°	9.7	4.50	12.5	3.35	14.2	2.37	12.0	2.60	16.8	1.58	20.0	1.12
77°	10.5	4.50	13.4	3.28	14.9	2.34	12.9	2.56	17.6	1.54	20.7	1.10
76°	11.3	4.50	14.1	3.21	15.6	2.32	13.8	2.46	18.5	1.51	21.5	1.09
75°	12.1	4.50	14.9	3.15	16.3	2.29	14.7	2.38	19.3	1.48	22.2	1.08
73°	13.6	4.50	16.3	3.04	17.7	2.24	16.5	2.22	20.9	1.43	23.7	1.05
70°	16.0	4.44	18.5	2.89	19.6	2.18	18.9	2.01	23.3	1.35	25.7	1.02
68°	17.4	4.21	19.8	2.80	20.9	2.14	20.6	1.90	24.8	1.31	27.1	1.00
65°	19.5	3.91	21.8	2.69	22.7	2.09	22.9	1.75	27.0	1.25	29.0	0.98
63°	20.8	3.53	23.1	2.62	23.9	2.07	24.5	1.67	28.5	1.21	30.3	0.97
60°	22.6	2.90	25.1	2.53	25.7	2.03	26.8	1.56	30.5	1.16	32.0	0.95
58°	23.9	2.52	26.2	2.27	26.9	2.01	28.3	1.49	31.8	1.13	33.3	0.94
55°	25.6	2.03	27.8	1.85	28.4	1.76	30.4	1.41	33.8	1.09	34.8	0.93
53°	26.8	1.75	28.9	1.61	29.4	1.54	31.7	1.25	34.9	1.06	35.9	0.92
50°	28.4	1.40	30.3	1.29	30.8	1.25	33.5	0.96	36.5	0.82	37.2	0.77
48°	29.5	1.20	31.4	1.11	31.7	1.08	34.7	0.80	37.5	0.68	38.1	0.64
45°	31.0	0.94	32.7	0.88	32.9	0.86	36.4	0.58	38.9	0.50	39.3	0.47
43°	32.0	0.79	33.6	0.74			37.5	0.46				
40°	33.4	0.59	34.8	0.56								
38°	34.3	0.48	35.6	0.45								

C: Boom angle
R: Load radius (m)
W: Rated lifting capacity (UNIT: x1,000kg)

RATED LIFTING CAPACITIES (JIB)

SPEC. SHEET NO. GT-600E-1-00301/EX-21

CLASS OF CRANE ; C3

Outriggers extended to middle (4.6m)												
C	43.0m Boom + 8.8m Jib						43.0m Boom + 15.2m Jib					
	5° Tilt		25° Tilt		45° Tilt		5° Tilt		25° Tilt		45° Tilt	
	R	W	R	W	R	W	R	W	R	W	R	W
81°	9.2	4.00	12.6	3.16	14.1	2.47	11.3	2.60	16.2	1.69	19.5	1.17
80°	10.1	3.49	12.9	2.74	15.1	2.43	12.4	2.48	17.3	1.65	20.9	1.15
79°	10.9	2.99	13.6	2.38	15.8	2.13	13.4	2.08	18.2	1.45	21.5	1.13
78°	11.7	2.56	14.5	2.06	16.5	1.85	14.2	1.72	19.1	1.22	22.4	1.07
77°	12.6	2.18	15.2	1.77	17.2	1.60	15.1	1.42	19.9	1.02	23.1	0.90
76°	13.4	1.85	16.0	1.50	18.0	1.38	16.0	1.15				
75°	14.2	1.55	16.8	1.26	18.7	1.17						

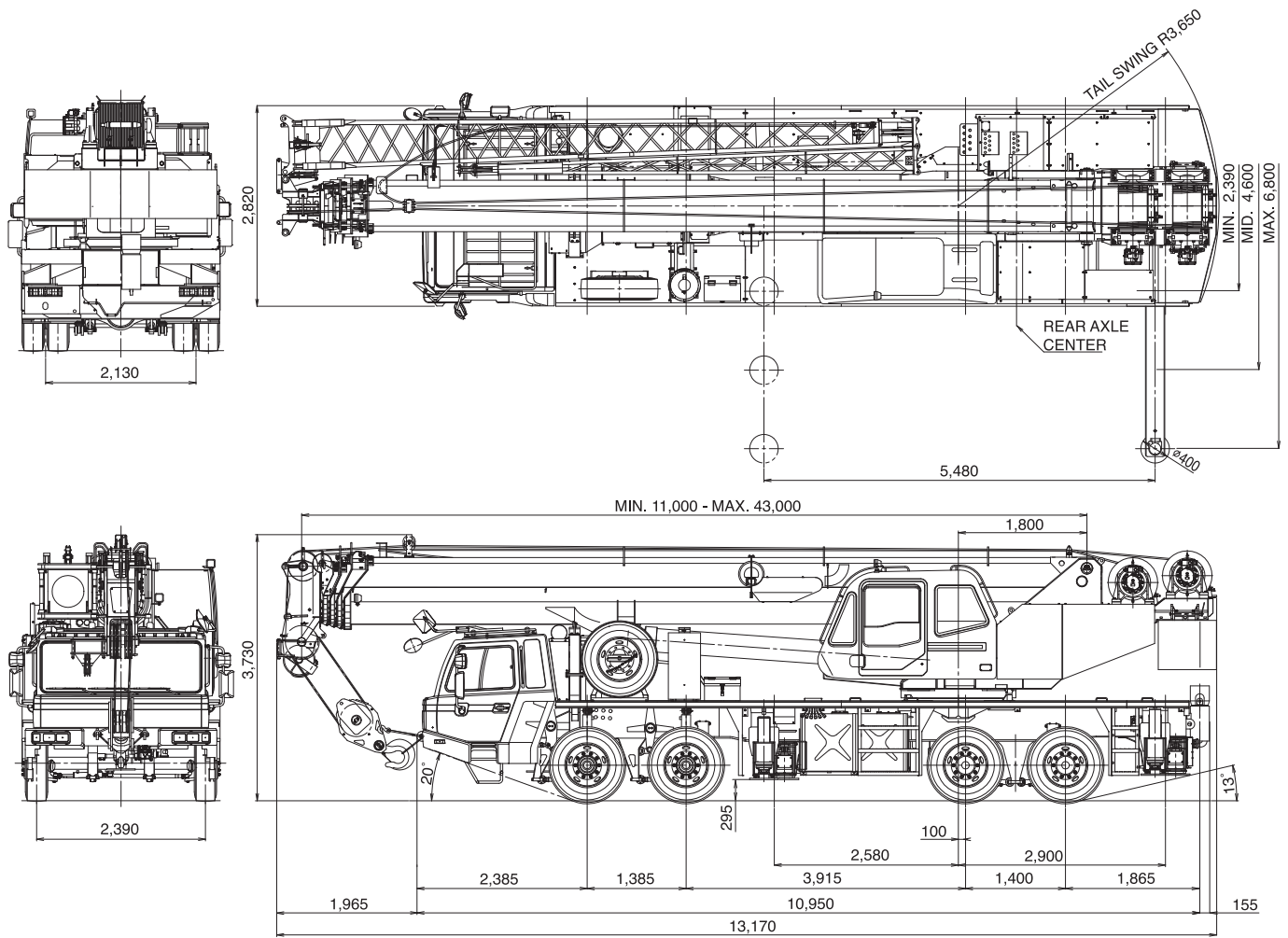
UNIT: kg CLASS OF CRANE ; C3

Outriggers extended to middle (4.6m)												
C	39.0m Boom (telescoping modeII) + 8.8m Jib						39.0m Boom (telescoping modeII) + 15.2m Jib					
	5° Tilt		25° Tilt		45° Tilt		5° Tilt		25° Tilt		45° Tilt	
	R	W	R	W	R	W	R	W	R	W	R	W
81°	8.1	4.40	11.0	3.58	13.0	2.47	10.2	2.60	15.0	1.69	18.4	1.17
80°	9.0	4.40	11.9	3.50	13.8	2.44	11.3	2.60	16.0	1.65	19.3	1.15
79°	9.9	4.21	12.7	3.30	14.6	2.40	12.3	2.60	17.0	1.61	20.1	1.13
78°	10.7	3.70	13.5	2.94	15.5	2.37	13.4	2.60	17.9	1.58	21.0	1.12
77°	11.4	3.25	14.3	2.62	16.3	2.34	14.2	2.31	18.8	1.54	21.9	1.10
76°	12.2	2.86	15.0	2.33	16.9	2.10	15.0	1.99	19.8	1.50	22.7	1.09
75°	13.0	2.52	15.7	2.06	17.7	1.88	15.8	1.72	20.6	1.31	23.5	1.08
73°	14.5	1.94	17.2	1.61	19.0	1.48	17.5	1.26	22.1	0.98	25.0	0.87
70°	16.8	1.26	19.3	1.06	21.0	0.99						
68°	18.3	0.91	20.7	0.76	22.2	0.72						

UNIT: kg CLASS OF CRANE ; C3

Outriggers extended to middle (4.6m)												
C	35.0m Boom (telescoping modeI) + 8.8m Jib						35.0m Boom (telescoping modeI) + 15.2m Jib					
	5° Tilt		25° Tilt		45° Tilt		5° Tilt		25° Tilt		45° Tilt	
	R	W	R	W	R	W	R	W	R	W	R	W
81°	7.3	4.50	10.3	3.58	12.1	2.47	9.1	2.60	14.0	1.69	17.6	1.17
80°	8.1	4.50	11.1	3.50	12.8	2.44	10.1	2.60	15.0	1.65	18.4	1.15
79°	8.9	4.50	11.8	3.42	13.5	2.40	11.0	2.60	15.8	1.61	19.1	1.13
78°	9.7	4.24	12.6	3.35	14.2	2.37	12.0	2.60	16.7	1.58	19.9	1.12
77°	10.3	3.72	13.3	3.01	14.9	2.34	12.9	2.56	17.5	1.54	20.6	1.10
76°	11.0	3.26	14.0	2.67	15.6	2.32	13.8	2.40	18.4	1.51	21.5	1.09
75°	11.7	2.85	14.7	2.37	16.3	2.10	14.5	2.08	19.2	1.48	22.2	1.08
73°	13.1	2.18	16.0	1.84	17.5	1.65	16.1	1.55	20.7	1.14	23.5	0.96
70°	15.2	1.40	18.0	1.21	19.3	1.10	18.4	0.93				
68°	16.5	1.00	19.1	0.86	20.5	0.79						

C: Boom angle
 R: Load radius (m)
 W: Rated lifting capacity (UNIT: x1,000kg)



Axle weight distribution chart

		Kilograms		
		Total	Front	Rear
Base machine with 300L fuel * incl. 35 t hook block (optional)		41,500	16,000	25,500
Remove	1 5.6 t hook block	-150	75	-225
	2 Top jib (6.4m)	-225	-200	-25
	3 Base jib (8.8m)	-500	-550	50
	4 Single top (Auxiliary boom sheave)	-50	-100	50
	5 Spare tire	-125	-110	-15
	6 Spare tire bracket	-25	-20	-5
	7 35 t hook block (optional)	-410	-700	290
	8 Counter weight and pins	-4,380	1,960	-6,340
Add:	1 60 t hook block (optional)	570	970	-400
	2 2 persons (driver and passenger)	150	200	-50
Permissible axle load		42,150	16,480	25,670

Specifications are subject to change without notice.



TADANO

TADANO LTD. (International Division)

4-12, Kamezawa 2-chome,
Sumida-ku, Tokyo 130-0014, Japan

Tel : +81-(0)3-3621-7750

Fax : +81-(0)3-3621-7785

<http://www.tadano.com/>

info@tadano.com

Printed in Japan

GT-600EX-2015-08-02